

Powered by Universal Speech Solutions LLC



AWS Polly Plugin

Usage Guide

Revision: 4

Created: August 22, 2018

Last updated: September 12, 2019

Author: Arsen Chaloyan

Table of Contents

1 Overview.....	4
1.1 Installation	4
1.2 Applicable Versions.....	4
2 Supported Features.....	5
2.1 MRCP Methods	5
2.2 MRCP Events	5
2.3 MRCP Header Fields.....	5
2.4 Speech Data	5
3 Supported Voices	6
4 Configuration Format.....	7
4.1 Document.....	7
4.2 Synthesis Settings	8
4.3 Waveform Manager	9
4.4 SDR Manager	10
4.5 Monitoring Agent	11
4.6 Usage Change Handler	12
4.7 Usage Refresh Handler	12
4.8 License Server.....	13
5 Configuration Steps	15
5.1 Using Default Configuration.....	15
5.2 Using with Lex.....	15
5.3 Specifying AWS Credentials	15
5.4 Specifying Synthesis Language	15
5.5 Specifying Sampling Rate.....	16
5.6 Specifying Voice Parameters.....	16
5.7 Specifying Speech Data	16
5.8 Maintaining Waveforms	16
5.9 Maintaining Synthesis Details Records	17
6 Monitoring Usage Details	18
6.1 Log Usage	18
6.2 Update Usage.....	18
6.3 Dump Channels.....	19
7 Usage Examples.....	20
7.1 SSML.....	20
7.2 Plain Text.....	20

8 Sequence Diagram 22

9 References..... 23

 9.1 AWS Polly 23

 9.2 Specifications..... 23

1 Overview

This guide describes how to configure and use the Amazon Web Services (AWS) Polly speech synthesis plugin to the UniMRCP server. The document is intended for users having a certain knowledge of AWS Polly and UniMRCP.



1.1 Installation

For installation instructions, use one of the guides below.

- RPM Package Installation (Red Hat / Cent OS)
- Deb Package Installation (Debian / Ubuntu)

1.2 Applicable Versions

Instructions provided in this guide are applicable to the following versions.



UniMRCP 1.5.0 and above
UniMRCP Polly Plugin 1.0.0 and above

2 Supported Features

This is a brief check list of the features currently supported by the UniMRCP server running with the Polly plugin.

2.1 MRCP Methods

- ✓ SPEAK
- ✓ STOP
- ✓ PAUSE
- ✓ RESUME
- ✓ BARGE-IN-OCCURRED
- ✓ SET-PARAMS
- ✓ GET-PARAMS

2.2 MRCP Events

- ✓ SPEECH-MARKER
- ✓ SPEAK-COMPLETE

2.3 MRCP Header Fields

- ✓ Kill-On-Barge-In
- ✓ Completion-Cause
- ✓ Voice-Gender
- ✓ Voice-Name
- ✓ Speech-Language

2.4 Speech Data

- ✓ Plain text (text/plain)
- ✓ SSML (application/ssml+xml or application/synthesis+ssml)

3 Supported Voices

The list of voices supported by AWS Polly is dynamically populated by the plugin on initial loading via an API call.

All the supported voices are listed in the following page:

<https://docs.aws.amazon.com/polly/latest/dg/voicelist.html>

4 Configuration Format

The configuration file of the Polly plugin is located in `/opt/unimrcp/conf/umspolly.xml`. The configuration file is written in XML.

4.1 Document

The root element of the XML document must be `<umspolly>`.

Attributes

Name	Unit	Description
license-file	File path	Specifies the license file. File name may include patterns containing '*' sign. If multiple files match the pattern, the most recent one gets used.
credentials-file	File path	Specifies the AWS credentials file to use. File name may include patterns containing '*' sign. If multiple files match the pattern, the most recent one gets used.
credentials-provider	String	Specifies a credentials provider. If not initialized or set to <i>custom</i> , the custom credentials provider is used to read credentials from <i>credentials-file</i> . Otherwise, if set to <i>default</i> , the AWS default credentials provider chain is used, and <i>credentials-file</i> is not observer. Available since 1.3.0.
init-sdk	Boolean	Specifies whether to initialize AWS SDK upon loading of the plugin. Must be set to true by default. Set it to false, if another plugin using the same AWS SDK is loaded prior to this plugin. Available since 1.1.0.
shutdown-sdk	Boolean	Specifies whether to shut down AWS SDK upon unloading of the plugin. Must be set to true by default. Set it to false, if another plugin using the same AWS SDK is unloaded next to this plugin. Available since 1.1.0.

Parent

None.

Children

Name	Unit	Description
<code><synth-settings></code>	String	Specifies synthesis parameters.
<code><waveform-manager></code>	String	Specifies parameters of the waveform manager.
<code><sdr-manager></code>	String	Specifies parameters of the Synthesis Details Record (SDR) manager.
<code><monitoring-agent></code>	String	Specifies parameters of the monitoring manager.
<code><license-server></code>	String	Specifies parameters used to connect to the license server. The use of the license server is optional.

Example

This is an example of a bare document.

```
<umspolly license-file="umspolly_*.lic" credentials-file="*.json" init-sdk="true" shutdown-  
sdk="true">  
</ umspolly>
```

4.2 Synthesis Settings

This element specifies synthesis parameters.

Attributes

Name	Unit	Description
language	String	Specifies the default language to use, if not set by the client.
bypass-ssml	Boolean	Specifies whether transparently bypass or parse received content in order to determine voice parameters set in SSML.
voice-name	String	Specifies the default voice name. Can be overridden by client.
voice-gender	String	Specifies the default voice gender. Can be overridden by

		client.
thread-pool-size	Integer	Specifies the size of the executor thread pool provided by AWS SDK.
region	String	Specifies the AWS region.

Parent

<umspolly>

Children

None.

Example

This is an example of synthesis parameters.

```
<synth-settings
  language="en-US"
  bypass-ssml="true"
  voice-name=""
  voice-gender=""
  thread-pool-size="1"
  region=""
/>
```

4.3 Waveform Manager

This element specifies parameters of the waveform manager.

Attributes

Name	Unit	Description
save-waveforms	Boolean	Specifies whether to save waveforms or not.
purge-existing	Boolean	Specifies whether to delete existing records on start-up.
max-file-age	Time interval [min]	Specifies a time interval in minutes after expiration of which a waveform is deleted. Set 0 for infinite.
max-file-count	Integer	Specifies the max number of waveforms to store. If reached, the oldest waveform is

		deleted. Set 0 for infinite.
waveform-folder	Dir path	Specifies a folder the waveforms should be stored in.

Parent

<umspolly>

Children

None.

Example

The example below defines a typical utterance manager having the default parameters set.

```
<waveform-manager
  save-waveforms="false"
  purge-existing="false"
  max-file-age="60"
  max-file-count="100"
  waveform-folder=""
/>
```

4.4 SDR Manager

This element specifies parameters of the Synthesis Details Record (SDR) manager.

Attributes

Name	Unit	Description
save-records	Boolean	Specifies whether to save recognition details records or not.
purge-existing	Boolean	Specifies whether to delete existing records on start-up.
max-file-age	Time interval [min]	Specifies a time interval in minutes after expiration of which a record is deleted. Set 0 for infinite.
max-file-count	Integer	Specifies the max number of records to store. If reached, the oldest record is deleted. Set 0 for infinite.

record-folder	Dir path	Specifies a folder to store recognition details records in. Defaults to <code>\${UniMRCPIInstallDir}/var</code> .
----------------------	----------	---

Parent

<umspolly>

Children

None.

Example

The example below defines a typical utterance manager having the default parameters set.

```
<sdr-manager
  save-records="false"
  purge-existing="false"
  max-file-age="60"
  max-file-count="100"
  waveform-folder=""
/>
```

4.5 Monitoring Agent

This element specifies parameters of the monitoring agent.

Attributes

Name	Unit	Description
refresh-period	Time interval [sec]	Specifies a time interval in seconds used to periodically refresh usage details. See <usage-refresh-handler>.

Parent

<umspolly>

Children

<usage-change-handler>
<usage-refresh-handler>

Example

The example below defines a monitoring agent with usage change and refresh handlers.

```
<monitoring-agent refresh-period="60">

  <usage-change-handler>
    <log-usage enable="true" priority="NOTICE"/>
  </usage-change-handler>

  <usage-refresh-handler>
    <dump-channels enable="true" status-file="umspolly-channels.status"/>
  </usage-refresh-handler >

</monitoring-agent>
```

4.6 Usage Change Handler

This element specifies an event handler called on every usage change.

Attributes

None.

Parent

<monitoring-agent>

Children

<log-usage>
<update-usage>
<dump-channels>

Example

This is an example of the usage change event handler.

```
<usage-change-handler>
  <log-usage enable="true" priority="NOTICE"/>
  <update-usage enable="false" status-file="umspolly-usage.status"/>
  <dump-channels enable="false" status-file="umspolly-channels.status"/>
</usage-change-handler>
```

4.7 Usage Refresh Handler

This element specifies an event handler called periodically to update usage details.

Attributes

None.

Parent

<monitoring-agent>

Children

<log-usage>

<update-usage>

<dump-channels>

Example

This is an example of the usage change event handler.

```
<usage-refresh-handler>
  <log-usage enable="true" priority="NOTICE"/>
  <update-usage enable="false" status-file="umspolly-usage.status"/>
  <dump-channels enable="false" status-file="umspolly-channels.status"/>
</usage-refresh-handler>
```

4.8 License Server

This element specifies parameters used to connect to the license server.

Attributes

Name	Unit	Description
enable	Boolean	Specifies whether the use of license server is enabled or not. If enabled, the license-file attribute is not honored.
server-address	String	Specifies the IP address or host name of the license server.
certificate-file	File path	Specifies the client certificate used to connect to the license server. File name may include patterns containing a '*' sign. If multiple files match the pattern, the most recent one gets used.
ca-file	File path	Specifies the certificate authority used to validate the license server.

channel-count	Integer	Specifies the number of channels to check out from the license server. If not specified or set to 0, either all available channels or a pool of channels will be checked based on the configuration of the license server.
----------------------	---------	--

Parent

<umspolly>

Children

None.

Example

The example below defines a typical configuration which can be used to connect to a license server located, for example, at 10.0.0.1.

```
<license-server
  enable="true"
  server-address="10.0.0.1"
  certificate-file="unilic_client_*.cert"
  ca-file="unilic_ca.crt"
/>
```

For further reference to the license server, visit

<http://unimrcp.org/licserver>

5 Configuration Steps

This section outlines common configuration steps.

5.1 Using Default Configuration

The default configuration should be sufficient for the general use.

5.2 Using with Lex

This section must be skipped if the Polly plugin is used without the Lex plugin. However, in case both Polly and Lex plugins are loaded into the same instance of UniMRCP server, then the plugins need to be configured in a certain way to ensure the AWS SDK is initialized and shutdown only once.

```
<umspolly license-file="umspolly_*.lic" credentials-file="aws.credentials" init-sdk="true" shutdown-sdk="false">
<umslex license-file="umslex_*.lic" credentials-file="aws.credentials" init-sdk="false" shutdown-sdk="true">
```

5.3 Specifying AWS Credentials

By default, the plugin uses credentials of an IAM user to consume AWS services. The procedure how to set up the credentials is documented in the installation guide. No further action is required if the IAM user is supposed to be used.

Since 1.3.0, the plugin can be configured to use the AWS default credentials provider chain, which in turn allows to derive an IAM role set on an instance UniMRCP server is running on. The behavior is controlled by the configuration attribute *credentials-provider*, which is supposed to be set to *default* to use the default credentials provider chain.

```
<umspolly license-file="umspolly_*.lic" credentials-file="aws.credentials" credentials-provider="default" sdk="true" shutdown-sdk="true">
```

Note, if the attribute *credentials-provider* is set to *default*, the attribute *credentials-file* is not observed.

5.4 Specifying Synthesis Language

Synthesis language can be specified by the client per MRCP session by means of the header field *Speech-Language* set in a *SET-PARAMS* or *SPEAK* request, or inline in the SSML data. Otherwise, the parameter *language* set in the configuration file *umspolly.xml* is used. The parameter defaults to *en-US*.

5.5 Specifying Sampling Rate

Sampling rate is determined based on the SDP negotiation. Refer to the configuration guide of the UniMRCP server on how to specify supported encodings and sampling rates to be used in communication between the client and server. Either 8 or 16 kHz can be used by AWS Polly API for synthesis.

5.6 Specifying Voice Parameters

Global Settings

The default voice name and gender can be specified from the configuration file *umspolly.xml* using the *voice-name* and *voice-gender* attributes of the *synth-settings* element.

MRCP Header Fields

The voice name and gender can be specified by the MRCP client in *SET-PARAMS* and *SPEAK* requests.

- Voice-Name

This is an optional parameter indicating the name of the voice to use for synthesis.

- Voice-Gender

This is an optional parameter indicating the preferred gender of the voice to use for synthesis, which can be set to either *male* or *female* or *neutral*.

SSML Content

The voice name and gender can also be specified using the corresponding attributes of the *voice* element in SSML content. In order to parse and determine the parameters, the *bypass-ssml* attribute of the *synth-settings* element must be set to *false* in the configuration file *umspolly.xml*.

5.7 Specifying Speech Data

Speech data can be specified by the MRCP client in *SPEAK* requests using one of the following content types:

- plain/text
- application/ssml+xml (or application/synthesis+ssml)

5.8 Maintaining Waveforms

Collection of waveforms is not required for regular operation and is disabled by default. However, enabling this functionality allows to save synthesized speech received from the AWS Polly service and later listen to them offline.

The relevant settings can be specified via the element *waveform-manager*.

- save-waveforms

Utterances can optionally be recorded and stored if the configuration parameter *save-waveforms* is set to true.

- `purge-existing`

This parameter specifies whether to delete existing waveforms on start-up.

- `max-file-age`

This parameter specifies a time interval in minutes after expiration of which a waveform is deleted. If set to 0, there is no expiration time specified.

- `max-file-count`

This parameter specifies the maximum number of waveforms to store. If the specified number is reached, the oldest waveform is deleted. If set to 0, there is no limit specified.

- `waveform-folder`

This parameter specifies a path to the directory used to store waveforms in. The directory defaults to `${UniMRCPInstallDir}/var`.

5.9 Maintaining Synthesis Details Records

Collection of synthesis details records (SDR) is not required for regular operation and is disabled by default. However, enabling this functionality allows to store details of each synthesis attempt in a separate file and analyze them later offline. The SDRs are stored in the JSON format.

The relevant settings can be specified via the element *sdr-manager*.

- `save-records`

This parameter specifies whether to save synthesis details records or not.

- `purge-existing`

This parameter specifies whether to delete existing records on start-up.

- `max-file-age`

This parameter specifies a time interval in minutes after expiration of which a record is deleted. If set to 0, there is no expiration time specified.

- `max-file-count`

This parameter specifies the maximum number of records to store. If the specified number is reached, the oldest record is deleted. If set to 0, there is no limit specified.

- `record-folder`

This parameter specifies a path to the directory used to store records in. The directory defaults to `${UniMRCPInstallDir}/var`.

6 Monitoring Usage Details

The number of in-use and total licensed channels can be monitored in several alternate ways. There is a set of actions which can take place on certain events. The behavior is configurable via the element *monitoring-agent*, which contains two event handlers: *usage-change-handler* and *usage-refresh-handler*.

While the *usage-change-handler* is invoked on every acquisition and release of a licensed channel, the *usage-refresh-handler* is invoked periodically on expiration of a timeout specified by the attribute *refresh-period*.

The following actions can be specified for either of the two handlers.

6.1 Log Usage

The action *log-usage* logs the following data in the order specified.

- The number of currently in-use channels.
- The maximum number of channels used concurrently.
- The total number of licensed channels.

The following is a sample log statement, indicating 0 in-use, 0 max-used and 2 total channels.

```
[NOTICE] Polly Usage: 0/0/2
```

6.2 Update Usage

The action *update-usage* writes the following data to a status file *umspolly-usage.status*, located by default in the directory `${UniMRCPIInstallDir}/var/status`.

- The number of currently in-use channels.
- The maximum number of channels used concurrently.
- The total number of licensed channels.
- The current status of the license permit.
- The license server alarm. Set to *on*, if the license server is not available for more than one hour; otherwise, set to *off*. This parameter is maintained only if the license server is used. Available since 1.2.0.

The following is a sample content of the status file.

```
in-use channels: 0
```

```
max used channels: 0
total channels: 2
license permit: true
licserver alarm: off
```

6.3 Dump Channels

The action *dump-channels* writes the identifiers of in-use channels to a status file *umspolly-channels.status*, located by default in the directory `${UniMRCPIInstallDir}/var/status`.

7 Usage Examples

7.1 SSML

This examples demonstrates how to perform speech synthesis by using a SPEAK request with an SSML content.

C->S:

```
MRCP/2.0 309 SPEAK 1
Channel-Identifier: 4dde51f37d1a9546@speechsynth
Content-Type: application/ssml+xml
Voice-Age: 28
Content-Length: 163

<?xml version="1.0"?>
<speak version="1.0" xml:lang="en-US" xmlns="http://www.w3.org/2001/10/synthesis">
  <p>
    <s>Welcome to Uni MRCP.</s>
  </p>
</speak>
```

S->C:

```
MRCP/2.0 83 1 200 IN-PROGRESS
Channel-Identifier: 4dde51f37d1a9546@speechsynth
```

S->C:

```
MRCP/2.0 122 SPEAK-COMplete 1 COMPLETE
Channel-Identifier: 4dde51f37d1a9546@speechsynth
Completion-Cause: 000 normal
```

7.2 Plain Text

This examples demonstrates how to perform speech synthesis by using a SPEAK request with a plain text content.

C->S:

MRCP/2.0 155 SPEAK 1
Channel-Identifier: 85667d0efbf95345@speechsynth
Content-Type: text/plain
Voice-Age: 28
Content-Length: 20

Welcome to Uni MRCP.

S->C:

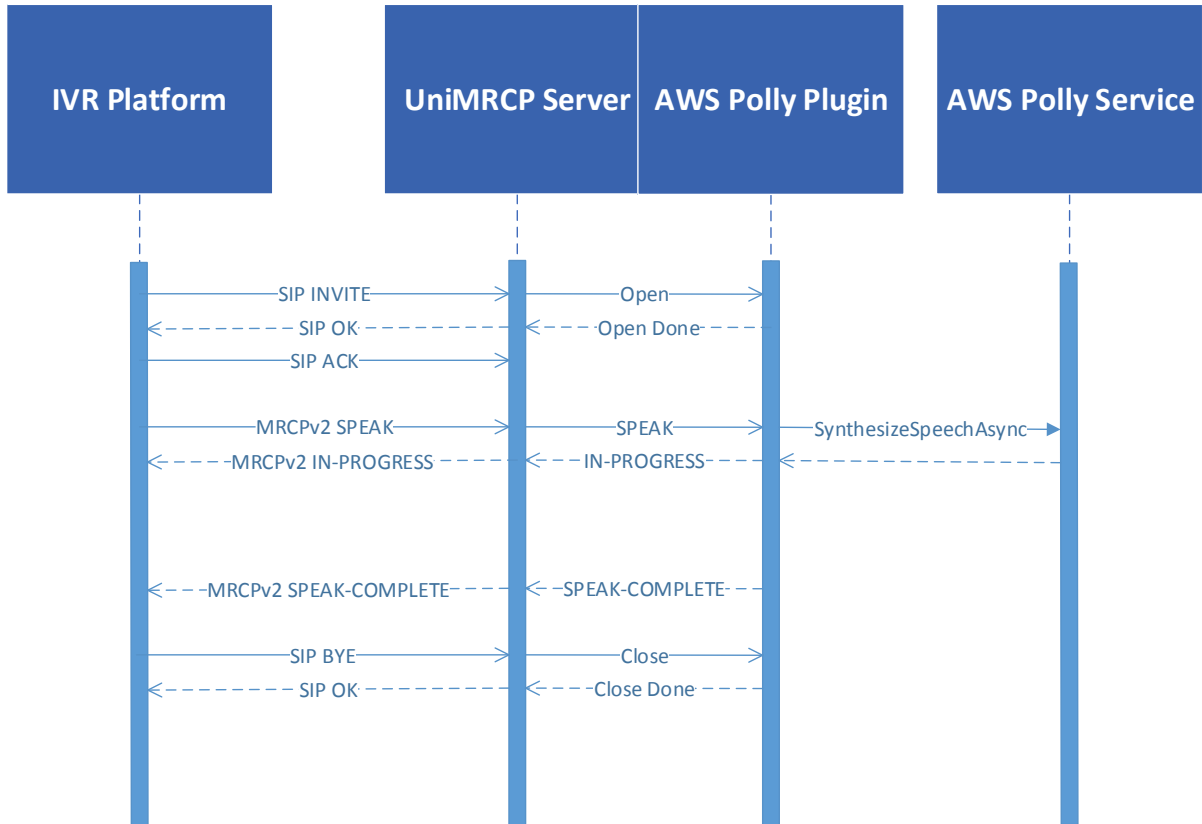
MRCP/2.0 83 1 200 IN-PROGRESS
Channel-Identifier: 85667d0efbf95345@speechsynth

S->C:

MRCP/2.0 122 SPEAK-COMPLETE 1 COMPLETE
Channel-Identifier: 85667d0efbf95345@speechsynth
Completion-Cause: 000 normal

8 Sequence Diagram

The following sequence diagram outlines common interactions between all the main components involved in a typical synthesis session performed over MRCPv2.



9 References

9.1 AWS Polly

- [What is Amazon Polly](#)
- [How It Works](#)
- [API Reference](#)

9.2 Specifications

- [Speech Synthesizer Resource](#)
- [SSML](#)